

HV Constant Current Power Supply

Compact Modular design

SC series ■■■■

SC-□P positive output
SC-□N negative output

- > Compact module
- > High accuracy, stability, low noise
- > Remote ON/OFF
- > Output current monitor
- > Over voltage protection



APPLICATIONS

* Electro Photo Process

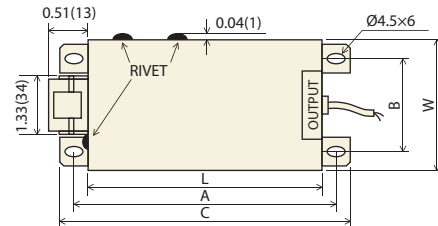
SUMMARY

The SC series is compact, constant current HV power supply. It is the perfect choice for electro photo processing, printer inspection, and research purposes.

LINEUP

Open Voltage (kV)	Output Current (μA)	Input Current (mA typ.)	MODEL		Case No.
			Positive	Negative	
1.5	100	150	SC-1.5P0.1	SC-1.5N0.1	C5
	1000	200	SC-1.5P1	SC-1.5N1	
3	100	150	SC-3P0.1	SC-3N0.1	
	1000	300	SC-3P1	SC-3N1	
6	100	200	SC-6P0.1	SC-6N0.1	C6
	1000	450	SC-6P1	SC-6N1	
10	100	200	SC-10P0.1	SC-10N0.1	

DIMENSIONS inch(mm)



Case	A	B	C	W	L	H
C5	4.72(120)	1.96(50)	5.11(130)	2.75(70)	4.33(110)	1.26(32)
C6	5.11(130)	2.75(70)	5.51(140)	3.93(100)	4.72(120)	1.37(35)

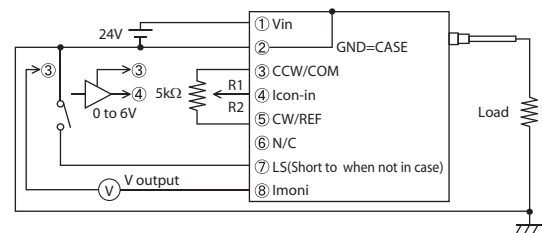
SPECIFICATIONS

- Input Voltage** 24Vdc ±10%
- Output Current Control** External 5kΩ potentiometer or external control voltage(I_{con}-in) 0 to 6Vdc Input impedance more than 30kΩ voltage rating 30Vdc MAX
- Ripple** 0.1%p-p
- Regulation** Load(50 to 100%) ±0.2%
Line(±10%) ±0.2%
- Constant current stability** ±0.2%/Hr
- Monitor** Current monitor
Accuracy ±1% 10V(-10V)/1000μA
Output impedance 1kΩ
- Remote switch** Output ON/OFF(SHORT=ON) by external contact signal
- Protection** Input reverse connection, output short circuit, over voltage
- Input terminal** 8 pin connector
- Output** Output lead wire 50cm(flying lead)
- Humidity** 20 to 80%RH(no condensation)

OPTION

CN8R Assembled input connector(accessory)
(connector with 25cm flying leads)

CONNECTION DIAGRAM



Output current setting characteristics

Output current can be controlled by varying control voltage or resistor value as per below graph.

