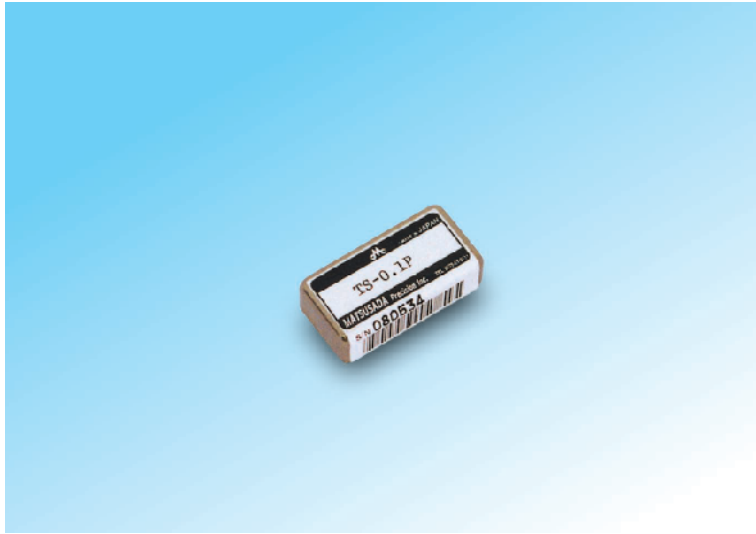


Miniature Size PCB Mountable

# High Voltage Power Supplies

TS Series for APD 50V to 300V

1037-02P



## FEATURES

- Miniature size, PCB mountable
- Low ripple, < 10mVp-p
- Output voltage controlled by remote control voltage
- EMI/RFI shielded
- Continuous output short circuit protected

## SUMMARY

TS Series is a high voltage DC-DC converter ideally suited for biasing Avalanche Photodiodes (APDs) and Photodetectors.

This series features exceptionally low ripple and noise, remote voltage control and continuous output short circuit protection.

Output voltage	Model		Rated load	Ripple	Input current
	Positive pola	Negative pola			
0 to 50Vdc	TS-0.05P	TS-0.05N	50kΩ	Less than 10mVp-p	40mA
0 to 100Vdc	TS-0.1P	TS-0.1N	100kΩ		50mA
0 to 200Vdc	TS-0.2P	TS-0.2N	400kΩ		50mA
0 to 250Vdc	TS-0.25P	TS-0.25N	500kΩ		70mA
0 to 300Vdc	TS-0.3P	TS-0.3N	600kΩ		70mA

## SPECIFICATIONS

**Input Voltage** 12V ± 1Vdc

**Output Control** Remote control voltage (Vcon-in)  
0 to 10Vdc (Input impedance : 10kΩ)

**Regulation** Line : 0.3% of max voltage for VCC ± 1V  
Load : 2% TYP of max voltage for load change of 10%

**Temp Coef** 0.05%/°C TYP (0°C to 50°C)

**Protection** Continuous output short circuit

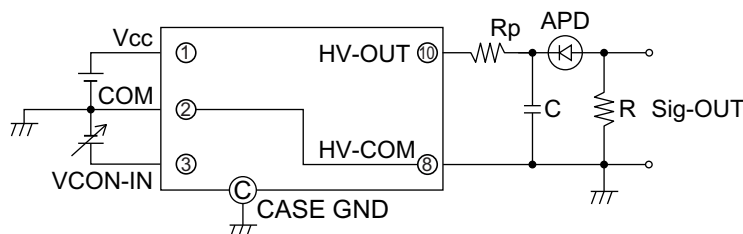
**Temp Range** Operating : -10 to 60°C  
Storage : -20 to 70°C

**Weight** 20g Approx

## DIMENSIONS mm(inch)

W15.2(0.6") × L30.2(1.19") × H8.5(0.33")

## CONNECTION DIAGRAM



\*PIN ② and ⑧ are internally connected, while isolated from case GND.

\*Recommend to use Rp for protection, and C for high speed application.

Rp = 100kΩ, C = 1nF is typical