

# High Voltage Power Supplies

TM Series 0.8kV to 3kV 1.5W

1034-02Pb



## FEATURES

- PCB mountable
- Low ripple, high stability, and well-regulated output
- Low Noise due to 6 -sided metal shielding
- A wide range of input voltage(+11 to +16 Vdc)
- External potentiometer or external control voltage programming
- Arc and continuous short circuit protection

## SUMMARY

TM Series is a compact, ultra low ripple and well regulated high voltage power supply suitable for various OEM or laboratory application. Electromagnetic shielding is provided through 6-sided metal shielding. All models are provided with arc and continuous short circuit protection for safe, reliable operation.

Output voltage (kVdc)	Output current (mA)*	Model		Ripple (mVp-p)
		Positive polar output	Negative polar output	
0 to 0.8	2	TM-0.8P	TM-0.8N	2
0 to 1.1	1.5	TM-1.1P	TM-1.1N	
0 to 1.5	1	TM-1.5P	TM-1.5N	3
0 to 2	0.8	TM-2P	TM-2N	7
0 to 3	0.5	TM-3P	TM-3N	20

\*Output voltage range for this output current is 50% to 100% of maximum output voltage.

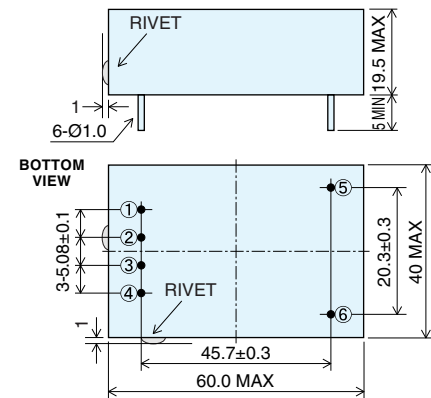
\*Output current must be derated linearly when operating at levels below 50% of the output voltage capability.

## SPECIFICATIONS

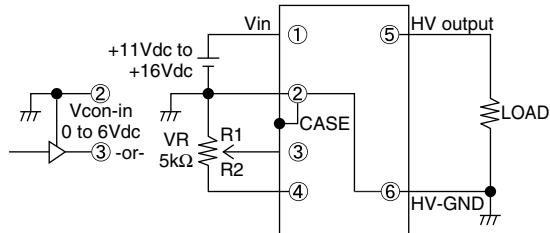
<b>Input voltage/current</b>	+11 to +16Vdc 240mA Typ
<b>Output control</b>	By external 5kΩ potentiometer or external control voltage(Vcon-in) 0 to 6 Vdc
<b>Regulation</b>	Line : ±0.01% of max voltage for Vin±1V Load : 0.01% of max voltage for full load change
<b>Stability</b>	0.01%/Hr 0.03%/8Hr
<b>Temperature coefficient</b>	0.005%/°C
<b>Protection</b>	Overload, arc and continuous output short circuit
<b>Temperature range</b>	Operating : -10°C to +50°C Storage : -25°C to +85°C
<b>Weight</b>	120g approx

Note : • Specifications are at the maximum rated output after ½Hr warm-up.  
• Specifications are subject to change without notice.

## DIMENSIONS mm



## CONNECTION DIAGRAM



1. PIN ②, ⑥ and case are internally connected, and should be always grounded.
2. Input impedance of Pin ③ is greater than 30KΩ
3. External potentiometer of T.C ≤ 100ppm/°C, PC ≥ ¼W is recommended.

## CHARACTERISTICS OF OUTPUT VOLTAGE SETTING

