

High Power and Compact HV Power Supply

TJ series 180V to 2kV 3W

1120-01Aa-1



FEATURES

- Compact and space saving design
- High power output of 3W
- Low ripple noise of 20mVp-p
- High reliability without solid state design
- Full protection (continuous short circuit, etc.)
- Low emission noise with 5-sided shield

SUMMARY

TJ series is on-board HV power supply with minimum mounting space and high power output of 3W. With its low noise output and high power, it is ideal for such applications as biasing multiple PMT and/or APD or powering amplifier of Piezo actuator driver.

LINEUP

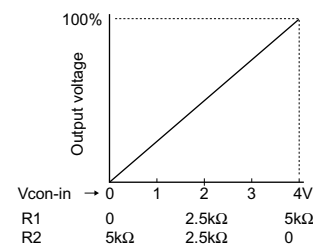
Output Voltage (Vdc)	Output Current (mA)	MODEL		Ripple (mVp-p)typ.	Size
		Positive polar	Negative polar		
0 to 180	16	TJ-0.18PM	TJ-0.18NM	20	Ⓐ
0 to 300	10	TJ-0.3PM	TJ-0.3NM	20	
0 to 350	8	TJ-0.35PM	TJ-0.35NM	20	
0 to 500	6	TJ-0.5PM	TJ-0.5NM	30	Ⓑ
0 to 1k	2	TJ-1PM	TJ-1NM	30	
0 to 1.5k	1.3	TJ-1.5PM	TJ-1.5NM	30	
0 to 2k	1	TJ-2PM	TJ-2NM	50	

Note: This model as integrated type power supply is designed with consideration of high voltage safety, but for further safety ground Ⓐ terminal=case when use.

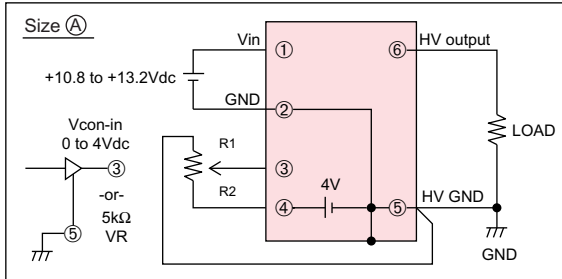
SPECIFICATIONS

Input Voltage/Current	+10.8 to +13.2Vdc, 400mA@12V
Output Control	By external 5kΩ potentiometer or external control voltage(Vcon-in)0 to 4Vdc
Regulation	Line: ±0.01% of max voltage for 12V ± 1V Load: ±0.05% of max voltage for full load change
Reference Voltage	4.2V±0.1V(5kΩ potentiometer) Line regulation: ±0.015%/V
Stability	0.01%/H 0.03%/8H
Temperature coefficient	0.01%/°C
Voltage setting accuracy	±2%(At maximum output by Vcon-in)
Protection	Over current with voltage drop, continuous output short circuit
Momentum max input voltage	+18Vdc MAX
Temperature range	Operating: -10°C to +50°C Storage: -20°C to +85°C
Weight	120g Approx

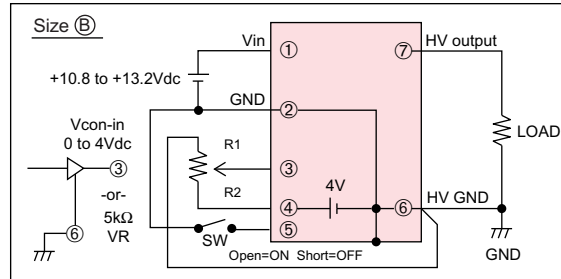
Characteristic of Output Voltage setting



CONNECTION DIAGRAM



1. Pin ②, ⑤ and case is connected inside.
2. Input impedance of Vcon-in(pin③) is over 100kΩ.
3. Select potentiometer with high temp. coeff. or metal sleeve resistor for external VR.



1. Pin ②, ⑥ and case is connected inside.
2. Input impedance of Vcon-in(pin③) is over 100kΩ.
3. Select potentiometer with high temp. coeff. or metal sleeve resistor for external VR.

DIMENSIONS inch(mm)

