

High Voltage Power Supplies

TD Series 0.35kV to 2kV 5W

1110-01A



FEATURES

- High power 5W for PMT
- Low ripple, high stability, and well-regulated output
- Low Noise due to 6 -sided metal shielding
- A wide range of input voltage
- External potentiometer or external control voltage programming
- Arc and continuous short circuit protection

SUMMARY

TD Series is miniaturized, well regulated high voltage power supply suitable for photomultiplier.
 TD series features high power output of 5W in such a compact size, and ideal when connecting multiple PMTs.
 All models are provided with arc and continuous short circuit protection for safe and reliable operation.

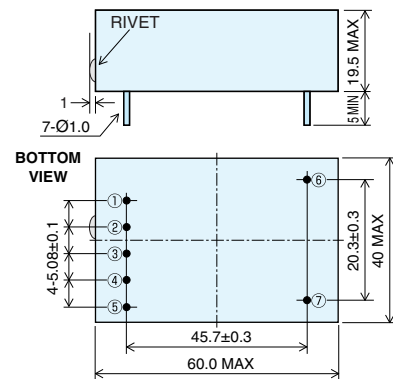
Output voltage (kVdc)	Output current (mA)	Model				Ripple (mVp-p)typ.
		Input voltage/Current +10.8 to +16.5Vdc/550mA@ +12V		Input voltage/Current +22.8 to +25.2Vdc/300mA@ +24V		
		Positive polar output	Negative polar output	Positive polar output	Negative polar output	
0 to 0.35	14	TD-0.35P	TD-0.35N	TD-0.35P-24	TD-0.35N-24	30
0 to 0.5	10	TD-0.5P	TD-0.5N	TD-0.5P-24	TD-0.5N-24	40
0 to 0.8	6	TD-0.8P	TD-0.8N	TD-0.8P-24	TD-0.8N-24	50
0 to 1.1	4.5	TD-1.1P	TD-1.1N	TD-1.1P-24	TD-1.1N-24	60
0 to 1.5	3.3	TD-1.5P	TD-1.5N	TD-1.5P-24	TD-1.5N-24	80
0 to 2	2.5	TD-2P	TD-2N	TD-2P-24	TD-2N-24	100

SPECIFICATIONS

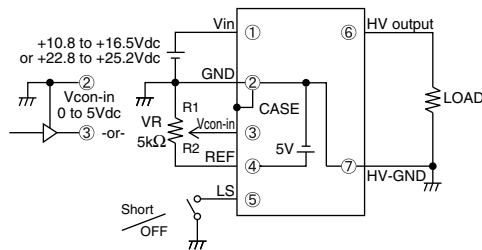
- Output control** By external 5kΩ potentiometer or external control voltage(Vcon-in) 0 to 5 Vdc
- Regulation** Line : ±0.005% of max voltage for +12V±1V or +24V ±5%
Load : 0.01% of max voltage for full load change
- Setting voltage accuracy** ±2%(at maximum output Vcon-in)
- Reference voltage** 5V±1% Line regulation ±0.015%/V
- Stability** 0.01%/Hr 0.03%/8Hr
- Temperature coefficient** 0.01%/°C
- Remote ON/OFF** By contact signal(Open: ON, Short: OFF)
- Protection** Overload, arc and continuous output short circuit
- Temperature range** Operating : -10°C to +50°C
Storage : -25°C to +85°C
- Weight** 120g approx

Note : • Specifications are at the maximum rated output after ½Hr warm-up.
 • Specifications are subject to change without notice.

DIMENSIONS mm



CONNECTION DIAGRAM



1. PIN ②, ⑦ and case are internally connected, and should be always grounded.
2. Input impedance of Pin ③ is greater than 100KΩ
3. External potentiometer of T.C ≤ 100ppm/°C, PC ≥ ¼W is recommended.

CHARACTERISTICS OF OUTPUT VOLTAGE SETTING

