

Electron Beam·Ion Beam HV power Supply

Ultra low noise Module

APPLICATIONS
* Electron Beam / Ion Beam
* Mass Spectrometry
* Electron Microscope
* Electrophoresis / Bio
* Precise HV inspection

NEW

K7 series ■■■

— 7W/10kV to 30kV —



- > Ideal for SEM · MASS
- > High stability 0.001%/5min
- > Ultra low noise 0.001%p-p
- > Output voltage, current monitor

SUMMARY

The K7 series is a compact HV power supply featuring ultra low noise and a highly stable output, making it an ideal choice for SEM and MASS SPEC applications. Its performance is unmatched for biasing, deflecting, or focusing electron and ion beams.

LINEUP

Output voltage	Output current	Model		Ripple (p-p)
		Positive output	Negative output	
0 to 10kV	700μA	K7-10P	K7-10N	100mV
0 to 15kV	450μA	K7-15P	K7-15N	150mV
0 to 20kV	350μA	K7-20P	K7-20N	200mV
0 to 30kV	250μA	K7-30P	K7-30N	300mV

SPECIFICATIONS

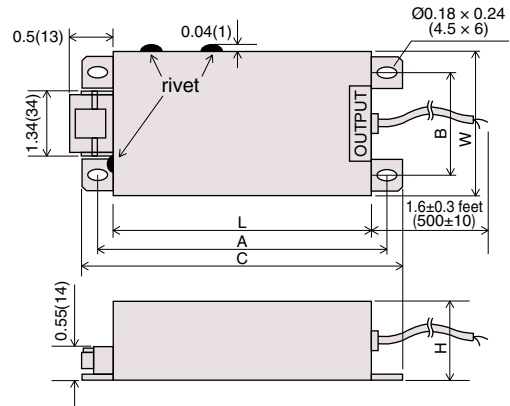
- Input Voltage** +24Vdc ±1V @600mA TYP.
- Output Voltage Control** An external 5kΩ potentiometer or a remote 0 to +10V source
- Regulation** Line : 0.001% for ±1V input change
Load : 0.001% for 50 to 100% load change
- Stability** 0.001%/5min 0.005%/Hr
- Temperature Coef.** 0.0025%/°C
- Protection** Short circuit and arc protected
- Input terminal** 8 pin connector
- Accessories** Mating connector and pins
(Recommendation :
wire for pin ①, ② are AWG18
wire for pin ③ to ⑧ are AWG22 to 18
Crimp Tooling for Molex crimp terminal 2478, 2578)
- HV output cable** HV shield cable 50cm(1.6 feet)
- Temperature range** Operating : 0 to 50 °C
Storage : -20 to 60 °C

Note : These specifications are at the maximum rated output after a 1/2Hr warm-up period unless otherwise specified.

OPTIONS

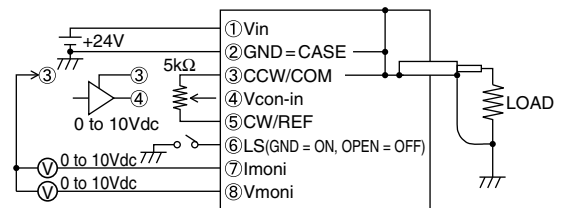
- CN8R** Assembled input connector(accessory)
(connector with 25cm flying leads)

DIMENSIONS inch(mm)



Output Voltage	A	B	C	W	L	H
10,15kV	6.7 (170)	2.76 (70)	7.09 (180)	3.94 (100)	6.3 (160)	1.49 (38)
20,30kV	7.68 (195)	3.54 (90)	8.07 (205)	4.72 (120)	7.28 (185)	1.69 (43)

CONNECTION DIAGRAM



*Lower ripple, higher stability, and higher temperature coefficient options are available. Please consult factory.